



*"Inspiring a love of lifelong learning"*

# Assessment, Learning and Teaching Policy

**Policy date: Spring 2025**  
**Review date: Spring 2027**

Learning at Charville is underpinned by our Core Values

Respect  
Independence  
Self-belief  
Honesty  
Caring  
Determination

## CONTENTS

Section	Item	Page Number	
1	Scope	3	
2	Aim	3 - 5	
3	Principles and rationale	5	
4	Non-Negotiables/Expectations	5	
5	Assessment Procedures	6 - 7	
	5.1	Formative Assessment	6
	5.2	EYFS	6
	5.3	Year 1	6
	5.4	Year 2-6	6
	5.5	English (Grammar, Reading and Writing) and Maths	7
6	Summative Assessment	7	

## 1. Scope

The **intent** for our curriculum at Charville Academy is to produce independent learners who are able to recall learning across their time in school. We encourage our children to be creative and imaginative and develop a lifetime love of learning. Research has shown that formative assessment can improve both children's motivation and capacity to learn. As a result, the strategies used within this policy, in conjunction with our emphasis on quality first teaching, can have a considerable impact on raising achievement.

The key purpose of our use of assessment is to move all children on in order for them to be secondary ready. Continued monitoring of each child's progress gives a clear picture of what each child is doing and their next steps and should help to enable teachers to ensure that children stay on track.

## 2. Aim

"Inspiring a love of lifelong learning"

At Charville Academy we create an atmosphere where standards are achieved in all areas of school life. We establish a firm foundation of values, skills and understanding which will give our pupils the basis to succeed at secondary school and into their adult lives.

We aim to provide a rich, stimulating experience for all our children, enabling them to develop academically, spiritually and socially. Everyone is encouraged to take an active role in the life of the school and follow our values-based approach to education.

It is important that each teacher knows what knowledge has been embedded into the long-term memory, what skills have been mastered, and what concepts have been fully understood. Through questioning and listening to learning conversations, misconceptions are identified. This enables teachers to reflect on what children are learning and informs future planning. The **implementation** of planning will focus on the following key areas:



Subject Specific  
Threshold Concepts  
Misconceptions



Book Rich  
Vocabulary Rich  
Resources Rich



Spacing  
Interleaving  
Retrieval



Progression  
Sequencing  
End Points

Therefore, learning and teaching has the following **impact**:

- Children becoming fluent and independent readers who develop a love of reading so they are prepared for the next aspect of life, therefore at every opportunity learning will start through a book or a key piece of text
- Children becoming articulate and effective communicators using subject specific vocabulary
- Children becoming engaged, independent and reflective learners so that they can be proactive problem solvers
- Children widening their local experiences and cultural opportunities so that they can fulfil their role as upstanding British citizens
- Children develop a broad and ambitious knowledge across all subjects through spaced learning, recalling and retrieving at every opportunity, so it becomes embedded in their long-term memory
- Children being able to express their feelings and emotions appropriately through self-regulation and values so that they are ready to learn
- Children from all backgrounds make good or better progress towards end points, regardless of their starting points.

The outcomes of our assessments will help children become involved in raising their own expectations. Through assessing, recording and reporting on pupils' work, we will:

- Create a curriculum that directly relates to the needs of the children to ensure that they are secure in their knowledge for the end of year expectations
- Enable staff to plan more effectively, by addressing their misconceptions and gaps/starting points
- Involve pupils and their parents/carers in their learning.

- Use the information to evaluate teaching
- Give pupils helpful feedback on their achievements and areas for development, in order that they can learn more effectively

### **3. Principles and rationale**

- Every child can achieve: teachers at Charville have the mind-set, 'What do I need to do next to enable children in my class to achieve?'
- The expectation is that pupils will make good or better progress, those who need to 'close the gap' will be required to make more progress
- The Early Years Foundation Stage Profile and the National Curriculum objectives will be used as the expectations for our children, however, those who are unable to access the curriculum will follow a more personalised and relevant curriculum to meet their needs
- Through staff CPD, staff are actively pursuing ways of improving their assessment practices. Assessment for learning should be at the forefront of teaching, planning and evaluating learning to ensure all children can make good/better progress
- All learners need to understand what they are being asked to learn and more importantly, what their areas for development are in order to improve.
- Teachers become experts at assessment; assessment will be effectively used to ensure the correct scaffolding is built into lessons to ensure all children achieve
- Assessment lies within the heart of the process of promoting children's learning. It provides a framework within which educational objectives may be set and children's progress monitored and analysed. This is achieved in partnership with the children and parents/ carers
- Assessment is incorporated systematically into teaching strategies in order to diagnose gaps in pupil's learning and measure progress. It helps the school to strengthen learning across the curriculum and helps the teachers enhance their teaching and enhance the accuracy of their judgements.

### **4. Non-Negotiables/Expectations**

Non-negotiables have been developed by subject coordinators to set out end of year expectations in each subject area. Teachers must refer to these and plan regular opportunities for pupils to practise, master and revisit these skills. These non-negotiables will be used to assess pupils progress within foundation subjects. Non-negotiables are taught and learnt alongside subject specific knowledge.

### **5. Assessment Procedures**

#### **5.1 Formative Assessment**

All teaching staff assess their class or group on a daily basis so that they can plan the next stage in each child's learning. It helps teachers monitor progress, provide motivation for the

children and helps inform planning. This formative assessment takes place on a regular basis and includes:

- Retrieval questions
- Low stake tests
- Self and peer assessment
- Verbal and written feedback provided that will have a direct impact on pupils' progress (see feedback policy)
- Rich, probing questioning
- Real time assessment for learning
- Independent work in their books
- Home learning tasks

## **5.2 EYFS**

The Reception Baseline Assessment, issued by the government, is a short, task-based assessment. It is not used to label or track individual pupils. Schools are required to carry out the assessment within the first 6 weeks of pupils starting reception. The baseline assessment is face-to-face with a mixture of tasks and observational checklists.

Class teachers use a combination of the EYFS profile and a school baseline assessment to measure children's progress, termly. The baseline assessment will result in a score that forms part of each child's baseline profile. By having a good understanding of the child's abilities when they start school, class teachers are able to measure each child's progress and plan for next steps in learning

## **5.3 Year 1**

In order to inform teaching, summative assessment takes place each term and is shared in Raising Achievement Meetings. These are informed by teacher assessment against National Curriculum objectives for writing and NFER (National Foundation Educational Research) tests for EGPS (English, Grammar, Punctuation and Spelling), Mathematics and Reading. Phonics assessments occur half-termly. Teachers make additional assessments based on the children's needs.

Year 1 will complete the government phonics screening check in the Summer term. The purpose of the phonics screening check is to confirm that all children have learnt phonic decoding to an age-appropriate standard.

## **5.4 Years 2 – 6**

In order to inform teaching, summative assessment takes place each term and is shared in Raising Achievement Meetings. These are informed by teacher assessment against National Curriculum objectives for writing and NFER tests for EGPS, Mathematics and Reading.

## **5.5 English (Grammar, Reading and Writing) and Maths**

For grammar, reading and maths, progress is tracked using standardised scores, from starting points (end of EYFS/key-stage 1):

- Three assessment points per year; November, March and July (May for those year groups who have statutory end of key stage assessments)
- Progress will be measured in two ways:
  - Against end of key-stage starting points
  - In-year, standardised score to standardised score.

## **6. Summative Assessment**

National Statutory Summative Assessment:

- EYFS On Entry Data
- Early Years Foundation Stage profile (Termly).
- Baseline Assessment for Reception (September)
- Phonics Screening Assessment (and Year 2 for those who didn't meet the required standard in Year 1)
- Year 4 Multiplication check (June)
- At the end of Key Stage 2, Year 6 to carry out SATs papers in Maths, Reading, EGPS. Teacher Assessments are also to be made in Writing and Science.

\* See Appendix 1 – Roles and Responsibilities in Assessment

\* See Appendix 2 – Assessment Calendar

**Written by:** Lorraine Newbey, Curriculum Lead

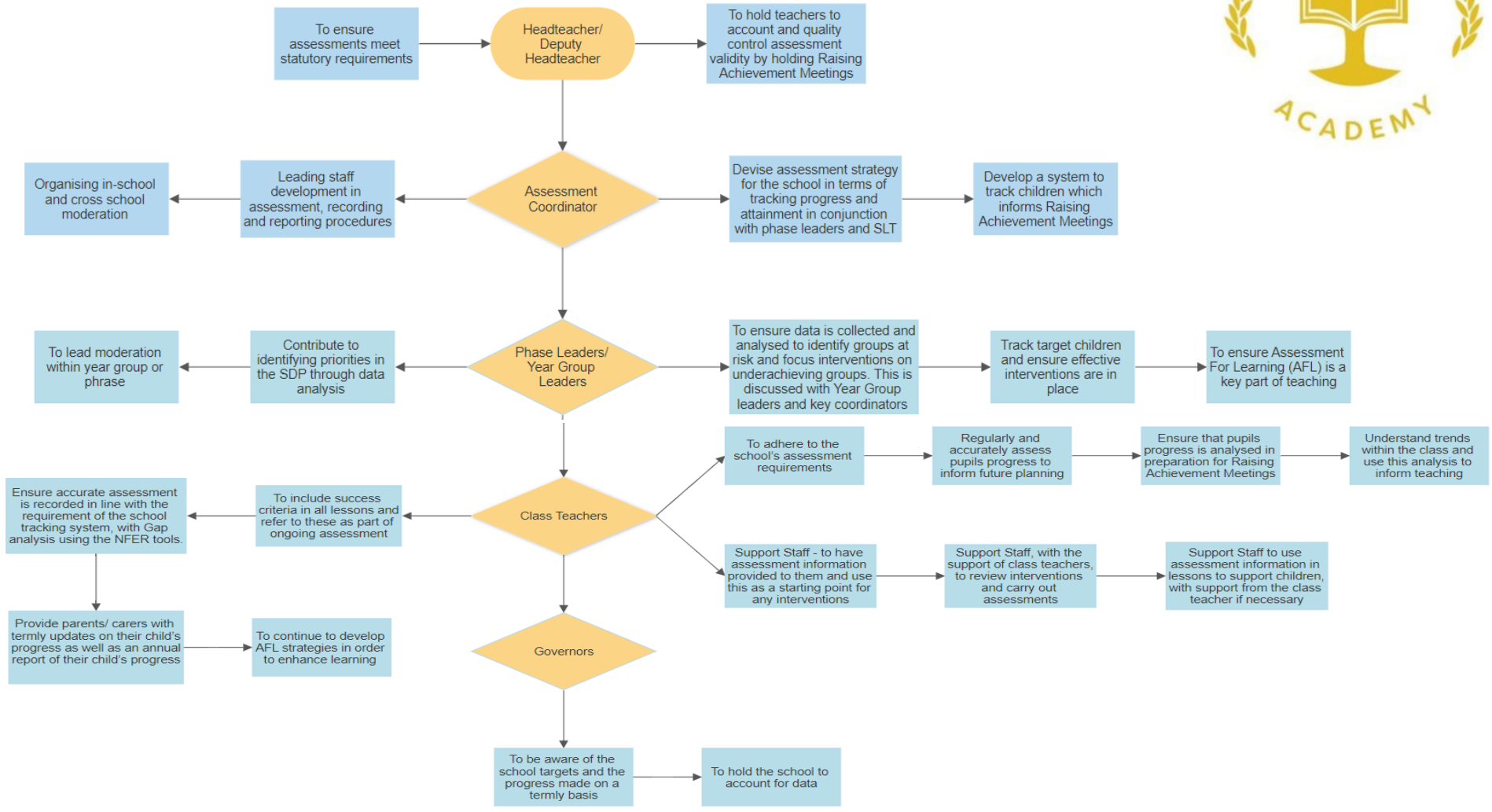
**Approved by:** Curriculum and Achievement Committee

**Date approved:** January 2025

**Review Date:** January 2027

**Appendix 1**

# Roles and Responsibilities in Assessment



## Appendix 2



### Assessment Calendar

September
<ul style="list-style-type: none"><li>• Share End of Year Expectations with children</li><li>• Familiarise children with Assessment for Learning strategies<ul style="list-style-type: none"><li>• Official Reception Baseline</li><li>• Reception Phonics Baseline<ul style="list-style-type: none"><li>• Year 6 baseline</li><li>• Reading Ages</li></ul></li></ul></li><li>• Reading running records for all children<ul style="list-style-type: none"><li>• Lowest 20% Readers Identified</li><li>• Baseline Multiplication check<ul style="list-style-type: none"><li>• Nursery Baseline</li></ul></li></ul></li></ul>
October
<ul style="list-style-type: none"><li>• <b><i>'Test orders' opens in the Primary Assessment Gateway</i></b></li><li>• Reading running records for children that require them<ul style="list-style-type: none"><li>• Parents' Evening</li><li>• Year 1 Phonics Baseline</li><li>• Early Years Data</li></ul></li><li>• Reception Speech Link assessments</li></ul>
November
<ul style="list-style-type: none"><li>• Year 6 Assessment week</li><li>• Reception and Year 1 Phonics Assessments<ul style="list-style-type: none"><li>• Assessment Week – Year 1-5</li><li>• Writing/Phonics moderation</li></ul></li><li>• Reading running records for all children<ul style="list-style-type: none"><li>• Lowest 20% Readers Reviewed<ul style="list-style-type: none"><li>• Data entry</li></ul></li></ul></li><li>• Gap analysis and Raising Achievement Forms to be completed<ul style="list-style-type: none"><li>• <b><i>'Test orders' closes</i></b></li></ul></li></ul>
December

- Raising Achievement Meeting
  - Nursery –assessment drop
  - Reception –assessment drop
- EYFS Raising Achievement Forms to be completed
  - Year 6 Assessment week
- EYFS Raising Achievement Meeting

### January

- Action plans in place based on dashboards/gap analysis
  - Year 1 Mock Phonics Screening
- Years 2 - 5 Targeted Children Phonics Check
  - Year 6 Assessment Week
  - Year 6 Data on system

### February

- End of KS2 Pupils registration opens
- Year 6 Raising achievement Meetings
  - Reception Phonics Check
- Year 1 Mock Phonics Screening

### March

- Assessment Week Y1-Y5
  - Year 6 Mock SATs
- Writing/Phonics moderation
- Year 1 Mock Phonics Screening
  - Data entry
- Gap analysis and Raising Achievement Forms to be completed
  - Raising Achievement Meeting
    - Parents' Evening
  - Reading running records for all children
    - Lowest 20% Readers Reviewed
      - Year 6 Data entry
- ***Deadline for submission End of KS2 "Early opening"***

### April

- Nursery –assessment drop
- Reception – assessment drop
- ***Deadline for applications for additional time – End of Key Stage 2 Assessment***

### May

- Year 1 Mock Phonics Screening
- Assessment and Data shared with governors
  - Year 6 SATs
- **Deadline for schools to submit the KS2 headteacher's declaration**

### June

- Year 4 Multiplication Check
- Year 1 Phonics Screening
- Reception Phonics Check
- Years 2 - 5 Targeted Children Phonics Check
  - Assessment Week Year 1-5
  - Writing/Phonics moderation
- Reading running records for all children
  - Lowest 20% Readers Reviewed
    - Data entry
- Gap analysis and Raising Achievement Forms to be completed
  - Deadline to submit data to Local Authority
    - Raising Achievement Meeting
    - Reception Phonics Check
    - Nursery - assessment drop
    - Reception - assessment drop
- ***Raw score to scaled score conversion tables and test materials for KS1 tests available***

### July

- Year 5 baseline
- KS2 SATS results
  - Reading Ages
- Annual Reports issued
  - Slip for parents with results from assessment week issued
  - Opportunity for parents to meet teachers to discuss reports
- ***Deadline for schools to submit review of KS2 marking applications***
- ***Deadline for local authorities to submit phonics screening check and KS1 teacher assessment data to DfE using COLLECT***

