



"Inspiring a love of lifelong learning"

Child Protection Policy

Policy date: Autumn 2025
Review date: Autumn 2026

Learning at Charville is underpinned by our Core Values

Respect
Independence
Self-belief
Honesty
Caring
Determination

Contents

Section	Contents	Page
	Important contacts	4
1.	Scope	5
2.	Aim	5
3.	Legislation and statutory guidance	5
4.	Definitions	6
5.	Equality statement	6
6.	Roles and responsibilities	7
	6.1 All staff	7
	6.2 The designated safeguarding lead (DSL)	8
	6.3 The Governing Board	8
	6.4 The Headteacher	8
7.	Confidentiality	9
8.	Mental Health	9
9.	Recognising abuse and taking action	10
	9.1 If a child is suffering or likely to suffer harm or is in immediate danger	10
	9.2 If a child makes a disclosure to you	10
	9.3 If you discover FGM has taken place or a pupils is at risk of FGM	11
	9.4 If you have concerns about a child (as opposed to believing a child is suffering or likely to suffer harm, or is in immediate danger)	11
	9.5 If you have concerns about extremism	13
	9.6 Child Sexual Exploitation (CSE) and Child Criminal Exploitation (CCE)	13
	9.7 Filtering and monitoring	14
	9.8 Concerns about a staff member or volunteer	18
	9.9 Allegations of abuse made against other pupils	18
	9.10 Sexual Harassment, Sexting and Upskirting	19
10.	Notifying parents	21
11.	Pupils with special educational needs and disabilities (SEND)	21
12.	Electronic devices/cameras	21
13.	Complaints and concerns about school safeguarding policies	22
	13.1 Complaints against staff	22
	13.2 Other complaints	22
	13.3 Whistle-blowing	22
14.	Record keeping	22
15.	Training	23

	15.1	All staff	23
	15.2	The DSL and Deputy DSLs	23
	15.3	Governors	23
	15.4	Recruitment – interview panels	23
	15.5	Staff who have contact with pupils and families	23
16	Monitoring arrangements		24
17	Related policies		24
	Appendix 1: Types of abuse		25
	Appendix 2: Safer recruitment and DBS checks – policy and procedures		27
	Appendix 3: Allegations of abuse made against staff HR Dealing with allegations policy		31
	Appendix 4: Specific safeguarding issues		36

Important Contacts

Role	Name	Contact Details
Designated Safeguarding Lead (DSL)	Nicola Kelly Headteacher	nkelly@charvilleacademy.org
Deputy Designated Safeguarding Leads (DDSLs)	Julietta Dunmall Deputy Head Louise Innes Deputy Head Lorraine Newbey Assistant Head	jdunmall@charvilleacademy.org linnes@charvilleacademy.org lnewbey@charvilleacademy.org
Local Authority Designated Officer (LADO) and Deputy LADO and Child protection Lead for Schools	Hannah Ives Nicola Diamond	hives@hillingdon.gov.uk 01895 250975 07753431285 ndiamond@hillingdon.gov.uk 01895 250975 07943 097366
Stronger Families Hub	Stronger Families Team Manager	01895 556006 strongerfamilieshub@hillingdon.gov.uk
Stronger Communities Manager and Prevent Lead	Fiona Gibbs	Tel: 01895 277035 Mobile: 07946714637 fgibbs@hillingdon.gov.uk
Chair Of Governors	Hayley O'Brien	hobrien@charvilleacademy.org
Safeguarding Governor	Ros Wilkinson	rwilkinson@charvilleacademy.org
Channel helpline	N/A	01895250111
Domestic Abuse Lead for Education	Laura Clark	lclark@hillingdon.gov.uk

1. Scope

This policy applies to all adults, including volunteers, working in or on behalf of Charville Academy and is an overarching document which sets out how everyone working in or for Charville Academy shares an objective to help keep children safe from harm and abuse.

2. Aim

The school aims to ensure that:

- Appropriate action is taken in a timely manner to safeguard and promote children's welfare
- All staff are aware of their statutory responsibilities with respect to safeguarding
- Staff are properly trained in recognising and reporting safeguarding issues.

3. Legislation and statutory guidance

This policy is based on the Department for Education's statutory guidance Keeping Children Safe in Education (2025) and Working Together to Safeguard Children (2023) as there is no update for 2025, and the Governance Handbook. We comply with this guidance and the arrangements agreed and published by our 3 local safeguarding partners: The local authority (LA), the safeguarding board and the local police.

This policy is also based on the following legislation:

- Keeping Children Safe in Education 2025 has been used to support this policy
- Part 3 of the schedule to the Education (Independent School Standards) Regulations 2019, which places a duty on academies and independent schools to safeguard and promote the welfare of pupils at the school
- The Children Act 1989 (and 2017 amendment), which provides a framework for the care and protection of children
- Section 5B(11) of the Female Genital Mutilation Act 2003 and Female Genital Law (2015), as inserted by section 74 of the Serious Crime Act 2015, which places a statutory duty on teachers to report to the police where they discover that female genital mutilation (FGM) appears to have been carried out on a girl under 18
- Statutory guidance on FGM, which sets out responsibilities with regards to safeguarding and supporting girls affected by FGM
- The Rehabilitation of Offenders Act 1974 and 1978 update, which outlines when people with criminal convictions can work with children
- Schedule 4 of the Safeguarding Vulnerable Groups Act 2006 and the Protection of Freedoms Bill, which defines what 'regulated activity' is in relation to children
- Statutory guidance on the Prevent duty, which explains schools' duties under the Counter-Terrorism and Security Act 2015 with respect to protecting people from the risk of radicalisation and extremism
- The Childcare (Disqualification) and Childcare (Early Years Provision Free of Charge) (Extended Entitlement) (Amendment) Regulations 2018 (referred to in this policy as the

“2018 Childcare Disqualification Regulations”) and Childcare Act 2006, which set out who is disqualified from working with children

- This policy also meets requirements relating to safeguarding and welfare in the statutory framework for the Early Years Foundation Stage

This policy also complies with our funding agreement and articles of association.

4. Definitions

Safeguarding and promoting the welfare of children means:

- Protecting children from maltreatment
- Preventing impairment of children’s health or development
- Ensuring that children grow up in circumstances consistent with the provision of safe and effective care
- Taking action to enable all children to have the best outcomes.

Child protection is part of this definition and refers to activities undertaken to prevent children suffering, or being likely to suffer, significant harm.

Abuse is a form of maltreatment of a child, and may involve inflicting harm or failing to act to prevent harm. Appendix 1 explains the different types of abuse.

Neglect is a form of abuse and is the persistent failure to meet a child’s basic physical and/or psychological needs, likely to result in the serious impairment of the child’s health or development. Appendix 1 defines neglect in more detail.

Sexting^{*1} (also known as youth produced sexual imagery*) is the sharing of sexual imagery (photos or videos) by children

Children includes everyone under the age of 18.

The following 3 **safeguarding partners** are identified in Keeping Children Safe in Education (and defined in the Children Act 2004, as amended by chapter 2 of the Children and Social Work Act 2017). They will make arrangements to work together to safeguard and promote the welfare of local children, including identifying and responding to their needs:

- The local authority (LA)
- The safeguarding board
- The local police.

5. Equality statement

Some children have an increased risk of abuse, and additional barriers can exist for some children with respect to recognising or disclosing it. We are committed to anti-discriminatory practice and recognise children’s diverse circumstances. We ensure that all children have the same protection, regardless of any barriers they may face.

¹ *Sexting - consensual and non consensual sharing of nude and/or semi-nude images and/or videos.

We give special consideration to children who:

- Have special educational needs or disabilities (SEND) (see section 10)
- Are young carers
- May experience discrimination due to their race, ethnicity, religion, gender identification or sexuality
- Have English as an additional language
- Are known to be living in difficult situations – for example, temporary accommodation or where there are issues such as substance abuse or domestic violence
- Are at risk of Female Genital Mutilation (FGM), sexual exploitation, forced marriage, or radicalisation
- Are asylum seekers
- Are at risk due to either their own or a family member's mental health needs
- Are looked after or previously looked after.

6. Roles and responsibilities

Safeguarding and child protection is **everyone's** legal responsibility. This policy applies to all staff, volunteers and governors in the school and is consistent with the procedures of the 3 safeguarding partners. Our policy and procedures also apply to extended school and off-site activities.

6.1 All staff

All staff will read and understand part 1 and Annex A of the Department for Education's statutory safeguarding guidance, [Keeping Children Safe in Education](#), and this guidance will be reissued following any changes.

All staff will be aware of:

Our systems which support safeguarding, including this child protection and safeguarding policy, the staff code of conduct, the role and identity of the Designated Safeguarding Lead (DSL), Deputy/Assistant Heads, the Behaviour Policy, and the safeguarding response to children who go missing from education

The early help process (sometimes known as the common assessment framework) and their role in it, including identifying emerging problems, liaising with the DSL, and sharing information with other professionals to support early identification and assessment

The process for making referrals to the local authority children's social care and for statutory assessments that may follow a referral, including the role they might be expected to play
What to do if they identify a safeguarding issue or a child tells them they are being abused or neglected, including specific issues such as FGM and how to maintain an appropriate level of confidentiality while liaising with relevant professionals

The signs of different types of abuse and neglect, as well as specific safeguarding issues, such as child sexual exploitation (CSE), indicators of being at risk from or involved with serious violent crime (CCE - Child Criminal Exploitation), FGM, interfamilial abuse and radicalisation

Appendix 1 of this policy outline in more detail how staff are supported to do this.

6.2 The designated safeguarding lead (DSL)

- The DSL is a member of the senior leadership team. Our DSL is Nicola Kelly (Headteacher) The DSL takes lead responsibility for child protection and wider safeguarding
- During term time, the DSL will be available during school hours for staff to discuss any safeguarding concerns
- When the Lead DSL is absent, Louise Innes, Julietta Dunmall and Lorraine Newbey (Deputy DSLs) will act as cover.

The DSLs will be given the time, funding, training, resources and support to:

- Provide advice and support to other staff on child welfare and child protection matters
- Take part in strategy discussions and inter-agency meetings and/or support other staff to do so
- Contribute to the assessment of children
- Refer suspected cases, as appropriate, to the relevant body (local authority children's social care, Channel programme, Disclosure and Barring Service, and/or police), and support staff who make such referrals directly
- The Deputy DSLs will also keep the Lead informed of any issues, and liaise with local authority case managers and designated officers for child protection concerns as appropriate
- The full responsibilities of the DSL, Deputy Head and Assistant Heads are set out in their job description
- Outside of term time DSL contact details are held by the local authority.

6.3 The Governing Board

The Governing Board will approve this policy at each review, ensure it complies with the law and hold the Headteacher to account for its implementation. The Governing Board will appoint a link governor to monitor the effectiveness of this policy in conjunction with the full governing board. This is always a different person from the DSL.

The Chair of Governors will act as the 'case manager' in the event that an allegation of abuse is made against the Headteacher, where appropriate (see Appendix 3).

All governors will read Keeping Children Safe in Education.

Section 15.3 has information on how governors are supported to fulfill their role.

6.4 The Headteacher

The Headteacher is responsible for the implementation of this policy, including:

- Ensuring that staff (including temporary staff) and volunteers are informed of our systems which support safeguarding, including this policy, as part of their induction
- Communicating this policy to parents when their child joins the school and via the school website
- Ensuring that the Lead DSL and Deputy DSLs have appropriate time, funding, training and resources, and that there is always adequate cover if the DSL is absent
- Ensuring that all staff undertake appropriate safeguarding and child protection training and update this regularly
- Acting as the 'case manager' in the event of an allegation of abuse made against another member of staff or volunteer, where appropriate (see Appendix 3)
- Ensuring the relevant staffing ratios are met, where applicable
- Making sure each child in the Nursery is assigned a key worker who is the first point of contact for any concerns including safeguarding.

7. Confidentiality

All safeguarding matters are confidential. Access to this information is on a secure (access only) drive. Electronic communication outside of school is via Egress or password protected documents. CPOMS (online portal) is used in school to alert assigned staff to any relevant concerns.

It should be noted that:

- Timely information sharing is essential to effective safeguarding
- Fears about sharing information must not be allowed to stand in the way of the need to promote the welfare, and protect the safety, of children
- The Data Protection Act (DPA) 2018 and GDPR do not prevent, or limit, the sharing of information for the purposes of keeping children safe
- If staff need to share 'special category personal data', the DPA 2018 contains 'safeguarding of children and individuals at risk' as a processing condition that allows practitioners to share information without consent if it is not possible to gain consent, it cannot be reasonably expected that a practitioner gains consent, or if to gain consent would place a child at risk
- Staff should never promise a child that they will not tell anyone about a report of abuse, as this may not be in the child's best interests
- The government's [information sharing advice for safeguarding practitioners](#) includes 7 'golden rules' for sharing information, and will support staff who have to make decisions about sharing information
- If staff are in any doubt about sharing information, they should speak to the designated safeguarding lead (or Deputy)
- Confidentiality is also addressed in this policy with respect to record-keeping in section 14, and allegations of abuse against staff in Appendix 3.

8. Mental Health

All staff should also be aware that mental health problems can, in some cases, be an indicator that a child has suffered or is at risk of suffering abuse, neglect or exploitation.

Only appropriately trained professionals should attempt to make a diagnosis of a mental health problem. Staff however, are well placed to observe children day-to-day and identify those whose behaviour suggests that they may be experiencing a mental health problem or be at risk of developing one.

Where children have suffered abuse and neglect, or other potentially traumatic adverse childhood experiences, this can have a lasting impact throughout childhood, adolescence and into adulthood. It is key that staff are aware of how these children's experiences can impact on their mental health, behaviour and education.

If staff have a mental health concern about a child that is also a safeguarding concern, immediate action should be taken, following the child protection policy and speaking to the designated safeguarding lead or a deputy.

The department has published advice and guidance on Preventing and Tackling Bullying, and Mental Health and Behaviour in Schools (which may also be useful for colleges). In addition, Public Health England has produced a range of resources to support primary school teachers to promote positive health, wellbeing and resilience among young people including its guidance Promoting children and young people's emotional health and wellbeing. Its resources include social media, forming positive relationships, smoking and alcohol.

9. Recognising abuse and taking action

Staff, volunteers and governors must follow the procedures set out below in the event of a safeguarding issue.

Please note – in this and subsequent sections, you should take any references to the DSL to mean “the DSL (or Deputy DSLs)”.

9.1 If a child is suffering or likely to suffer harm or is in immediate danger

Make a referral to children's social care by using the Stronger Families Hub and/or the police **immediately** if you believe a child is suffering or likely to suffer from harm, or in immediate danger. **Anyone can make a referral.**

Tell the DSL (see section 6.2) as soon as possible if you make a referral directly.

All referrals within school are actioned using the Stronger Families Hub Portal and sent via secure email or Egress by the DSLs.

9.2 If a child makes a disclosure to you

If a child discloses a safeguarding issue to you, you should:

- Listen to and believe them. Allow them time to talk freely and do not ask leading questions

- Stay calm and do not show that you are shocked or upset
- Tell the child they have done the right thing in telling you. Do not tell them they should have told you sooner
- Explain what will happen next and that you will have to pass this information on. Do not promise to keep it a secret
- Write up your conversation / add onto CPOMS before you leave school that day in the child's own words. Stick to the facts, and do not put your own judgment on it
- Sign and date the write-up (if not on CPOMS) and pass it on to the DSL. Alternatively, if appropriate, make a referral to children's social care and/or the police directly (see 9.1), and tell the DSL as soon as possible that you have done so.

9.3 If you discover that FGM has taken place or a pupil is at risk of FGM

The Department for Education's Keeping Children Safe in Education explains that FGM comprises "all procedures involving partial or total removal of the external female genitalia, or other injury to the female genital organs".

FGM is illegal in the UK and a form of child abuse with long-lasting, harmful consequences. It is also known as 'female genital cutting', 'circumcision' or 'initiation'.

Possible indicators that a pupil has already been subjected to FGM, and factors that suggest a pupil may be at risk, are set out in appendix 4.

Any teacher who discovers (either through disclosure by the victim or visual evidence) that an act of FGM appears to have been carried out on a **pupil under 18** must immediately report this to the police, personally. This is a statutory duty, and teachers will face disciplinary sanctions for failing to meet it.

Any other member of staff who discovers that an act of FGM appears to have been carried out on a **pupil under 18** must speak to the DSL and follow our local safeguarding procedures.

The duty for teachers mentioned above does not apply in cases where a pupil is at risk of FGM or FGM is suspected but is not known to have been carried out. Staff should not examine pupils.

Any member of staff who suspects a pupil is at risk of FGM or suspects that FGM has been carried out must speak to the DSL and follow our local safeguarding procedures. The LA referral form would be completed and sent off.

9.4 If you have concerns about a child (as opposed to believing a child is suffering or likely to suffer from harm, or is in immediate danger)

Figure 1 (flowchart) on page 16 illustrates the procedure to follow if you have any concerns about a child's welfare.

Where possible, speak to the DSL first to agree a course of action. If in exceptional circumstances the DSL/Deputy DSLs are not available, this should not delay appropriate action being taken. Speak to a member of the senior leadership team and/or take advice from local authority children's social care. You can also seek advice at any time from the NSPCC helpline on 0808 800 5000 or the Local Authority CP Advisor.

Make a referral to local authority children's social care directly, if appropriate (see 'Referral' below). Share any action taken with the DSL as soon as possible.

All staff should be aware that safeguarding incidents and/or behaviours can be associated with factors outside the school and/or can occur between children outside of these environments. All staff, but especially the DSL/ Deputy DSLs should consider whether children are at risk of abuse or exploitation in situations outside their families. Extra-familial harms take a variety of different forms and children can be vulnerable to multiple harms including (but not limited to) sexual exploitation, criminal exploitation and serious youth violence.

Early help

If early help is appropriate, the DSL will generally lead on liaising with other agencies and setting up an inter-agency assessment as appropriate. Staff may be required to support other agencies and professionals in an early help assessment (through the use of the Stronger Families portal), in some cases acting as the lead practitioner.

The DSL will keep the case under constant review and the school will consider a referral to local authority children's social care if the situation does not seem to be improving. Timelines of interventions will be monitored and reviewed.

An Early Help Assessment form will be completed by the Lead DSL/ Deputy DSLs if needed and sent to the local authority.

Referral

If it is appropriate to refer the case to local authority children's social care or the police, the DSL will make the referral or support you to do so. This is through the Stronger Families Hub.

Where it is believed that a student is suffering from, or is at risk of, significant harm, we will follow the procedures set out by the Local Safeguarding Children Board (LSCB) and take accounts of guidance issued by the DFE. Concerns are recorded on CPOMs (secure portal) and all staff have a log in.

Parents/carers may access the school's Child Protection procedures via the website. A copy is available from school, on request.

Telephone referrals to Social Care will be followed up in writing within 48 hours, where appropriate.

Any written records of any concern regarding a child's safety will be kept in a file in a locked cabinet in the school office. This is separate from the main pupil file.

The school recognises that it does not have the responsibility to investigate cases of suspected child abuse.

We will cooperate with relevant external agencies in any enquiries regarding child protection matters, including representation at child protection conferences, core groups and multi-agency planning meetings.

Parents will be advised of the intention to refer to Social Care and their views and co-operation sought, unless we have good reason to believe that to do so would place a child at greater risk of harm. This is always determined by advice given by social care

All staff will make it clear to any child disclosing information that they cannot guarantee confidentiality, but they will only pass the information on to the people that can help them.

Information concerning students at risk will be shared with all members of staff on a “need to know” basis. The DSLs will make a judgment in each individual case about who needs and has a right to access particular information.

Where there are concerns about a student, a teacher may be asked to log all concerns on CPOMs and alert all DSLs.

If the child’s situation does not seem to be improving after the referral, the DSL or person who made the referral must follow local escalation procedures to ensure their concerns have been addressed and that the child’s situation improves. This involves contact with the duty manager at the local authority and Head of Children’s Services.

9.5 If you have concerns about extremism

If a child is not suffering or likely to suffer from harm, or in immediate danger, where possible speak to the DSL first to agree a course of action.

If in exceptional circumstances the Lead DSL and Deputy DSLs are not available, this should not delay appropriate action being taken. Speak to a member of the senior leadership team and/or seek advice from local authority children’s social care. Make a referral to local authority children’s social care directly, if appropriate (see ‘Referral’ above).

Where there is a concern, the DSL will consider the level of risk and decide which agency to make a referral to. This could include [Channel](#), the government’s programme for identifying and supporting individuals at risk of being drawn into terrorism, or the local authority children’s social care team. Contact can also be made to Fiona Gibbs – Prevent Lead – LBH.

The Department for Education also has a dedicated telephone helpline, 0800 011 3764 which school staff and governors can call to raise concerns about extremism with respect to a pupil. You can also email counter.extremism@education.gov.uk. Note that this is not for use in emergency situations.

In an emergency, call 999 or the confidential anti-terrorist hotline on 0800 011 3764 if you:

- Think someone is in immediate danger
- Think someone may be planning to travel to join an extremist group
- See or hear something that may be terrorist-related

9.6 Child Sexual Exploitation (CSE) and Child Criminal Exploitation (CCE)

Both CSE and CCE are forms of abuse and both occur where an individual or group takes advantage of an imbalance in power to coerce, manipulate or deceive a child into sexual or criminal activity. Whilst age may be the most obvious, this power imbalance can also be due to a range of other factors including gender, sexual identity, cognitive ability, physical strength, status and access to economic or other resources. In some cases, the abuse will be in exchange for something the victim needs or wants and/or will be to the financial benefit or other advantage (such as increased status) of the perpetrator or facilitator. The abuse can be perpetrated by individuals or groups, males or females and children or adults. The abuse can be a one-off occurrence or a series of incidents over time, and range from opportunistic to complex organised abuse. It can involve force and/or enticement-based methods of compliance and may, or may not, be accompanied by violence or threats of violence. Victims can be exploited even when activity appears consensual and it should be noted exploitation as well as being physical can be facilitated and /or take place online.

9.7 Filtering and Monitoring

Appropriate filters and appropriate monitoring systems are in place and are regularly reviewed for their effectiveness. Measures are in place to limit children's exposure to the above risks from the school's IT system.

Information on Filtering & Monitoring in Paragraphs 140 – 148 (KCSIE, 2025)

Filtering and monitoring

140. Whilst considering their responsibility to safeguard and promote the welfare of children and provide them with a safe environment in which to learn, governing bodies and proprietors should be doing all that they reasonably can to limit children's exposure to the above risks from the school or college's IT system. As part of this process, governing bodies and proprietors should ensure their school or college has appropriate filtering and monitoring systems in place and regularly review their effectiveness. They should ensure that the leadership team and relevant staff have an awareness and understanding of the provisions in place and manage them effectively and know how to escalate concerns when identified. Governing bodies and proprietors should consider the number of and age range of their children, those who are potentially at greater risk of harm and how often they access the IT system along with the proportionality of costs versus safeguarding risks.

141. The appropriateness of any filtering and monitoring systems are a matter for individual schools and colleges and will be informed in part, by the risk assessment required by the Prevent Duty.⁴¹

142. The Department for Education's filtering and monitoring standards set out that schools and colleges should:

- identify and assign roles and responsibilities to manage filtering and monitoring systems.
- review filtering and monitoring provision at least annually.
- block harmful and inappropriate content without unreasonably impacting teaching and learning.
- have effective monitoring strategies in place that meet their safeguarding needs.
- schools can use the

department's 'plan technology for your school service' to self-assess against the filtering and monitoring standards and receive personalised recommendations on how to meet them.

143. Governing bodies and proprietors should review the standards and discuss with IT staff and service providers what more needs to be done to support schools and colleges in meeting this standard. Additional guidance on "appropriate" filtering and monitoring can be found at: 41 The Prevent duty Departmental advice for schools and childcare providers and Home Office Statutory guidance: Prevent duty guidance. 41 • UK Safer Internet Centre: <https://saferinternet.org.uk/guide-andresource/teachers-and-school-staff/appropriate-filtering-and-monitoring>. The UK Safer Internet Centre produced a series of webinars for teachers on behalf of the Department. These webinars were designed to inform and support schools with their filtering and monitoring responsibilities and can be accessed at Filtering and monitoring webinars available – UK Safer Internet Centre. • South West Grid for Learning (swgfl.org.uk) has created a tool to check whether a school or college's filtering provider is signed up to relevant lists (CSA content, Sexual Content, Terrorist content, Your Internet Connection Blocks Child Abuse & Terrorist Content). • Support for schools when considering what to buy and how to buy it is available via the: schools' buying strategy with specific advice on procurement here: [buying for schools](#). • The Department has published Generative AI: product safety expectations to support schools to use generative artificial intelligence safely, and explains how filtering and monitoring requirements apply to the use of generative AI in education. Information security and access management

144. Education settings are directly responsible for ensuring they have the appropriate level of security protection procedures in place in order to safeguard their systems, staff and learners and review the effectiveness of these procedures periodically to keep up with evolving cyber-crime technologies. Guidance on esecurity is available from the National Education Network. In addition, schools and colleges should consider taking appropriate action to meet the Cyber security standards for schools and colleges which were developed to help them improve their resilience against cyber-attacks. Broader guidance on cyber security including considerations for governors and trustees can be found at National Cyber Security Centre – NCSC. [Reviewing online safety](#)

145. Technology, and risks and harms related to it, evolve, and change rapidly. Schools and colleges should consider carrying out an annual review of their approach to online safety, supported by an annual risk assessment that considers and reflects the risks their children face. A free online safety self-review tool for schools can be found via the [360 safe website](#) or [LGfL online safety audit](#).

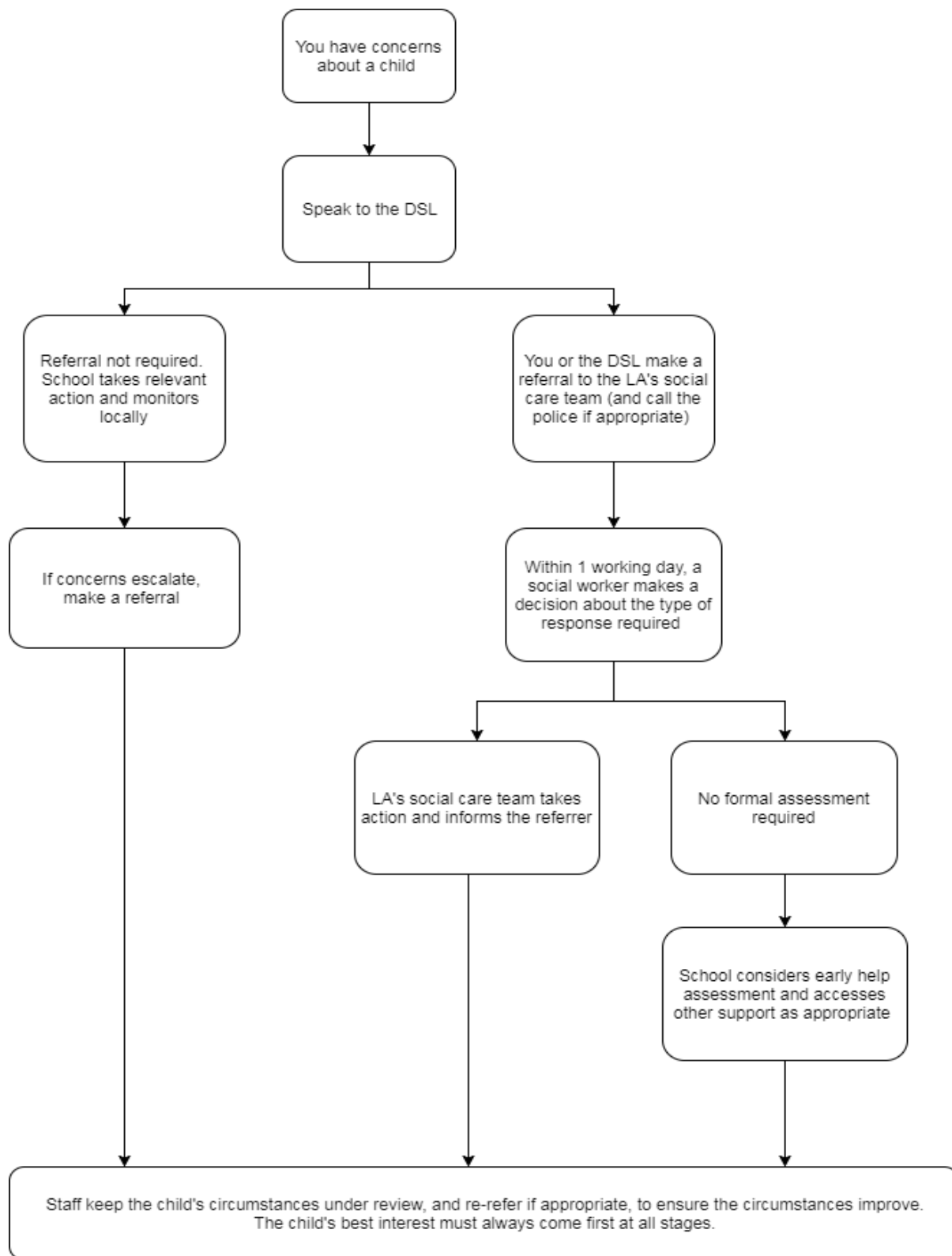
146. UKCIS has published [Online safety in schools and colleges: Questions from the governing board](#). The questions can be used to gain a basic understanding of 42 the current approach to keeping children safe online; learn how to improve this approach where appropriate; and find out about tools which can be used to improve the approach. It has also published an [Online Safety Audit Tool](#) which helps mentors of trainee teachers and newly qualified teachers induct mentees and provide ongoing support, development and monitoring.

147. When reviewing online safety provision, the UKCIS external visitors guidance highlights a range of resources which can support educational settings to develop a whole school approach towards online safety. Further information and support

148. There is a wealth of additional information available to support schools, colleges and parents to keep children safe online.

Figure 1: procedure if you have concerns about a child’s welfare (as opposed to believing a child is suffering or likely to suffer from harm, or in immediate danger)

(Note –if the DSL is unavailable, this should not delay action. See section 9.4 for what to do.)



9.8 Concerns about a staff member or volunteer

If you have concerns about a member of staff or volunteer, or an allegation is made about a member of staff or volunteer posing a risk of harm to children, speak to the Headteacher. If the concerns/allegations are about the Headteacher, speak to the Chair of Governors. The Headteacher/Chair of Governors will then follow the procedures set out in appendix 3, if appropriate.

9.9 Allegations of abuse made against other pupils

We recognise that children are capable of abusing their peers. Abuse will never be tolerated or passed off as “banter”, “just having a laugh” or “part of growing up”. We also recognise the gendered nature of child-on-child abuse (i.e. that it is more likely that girls will be victims and boys perpetrators). However, all child-on-child abuse is unacceptable and will be taken seriously.

Most cases of pupils hurting other pupils will be dealt with under our school’s behaviour policy, but this child protection and safeguarding policy will apply to any allegations that raise safeguarding concerns. This might include where the alleged behaviour:

- Is serious, and potentially a criminal offence
- Could put pupils in the school at risk
- Is violent
- Involves pupils being forced to use drugs or alcohol
- Involves sexual exploitation, sexual abuse or sexual harassment, such as indecent exposure, sexual assault, upskirting or sexually inappropriate pictures or videos (including sexting*).

If a pupil makes an allegation of abuse against another pupil:

- You must record the allegation and tell the DSL, but do not investigate it
- The DSL will contact the local authority children’s social care team and follow its advice, as well as the police if the allegation involves a potential criminal offence
- The DSL will put a risk assessment and support plan into place for all children involved (including the victim(s), the child(ren) against whom the allegation has been made and any others affected) with a named person they can talk to if needed
- The DSL will contact the children and adolescent mental health services (CAMHS), if appropriate.

We will minimise the risk of child-on-child abuse by:

- Challenging any form of derogatory or sexualised language or behaviour, including requesting or sending sexual images
- Being vigilant to issues that particularly affect different genders – for example, sexualised or aggressive touching or grabbing towards female pupils, and initiation or hazing type violence with respect to boys
- Ensuring our curriculum helps to educate pupils about appropriate behaviour and consent
- Ensuring pupils know they can talk to staff confidentially by sharing this with children through assemblies and class

- Ensuring staff are trained to understand that a pupil harming a peer could be a sign that the child is being abused themselves and that this would fall under the scope of this policy.

9.10 Sexual Harassment, Sexting* and Upskirting

Staff responsibilities when responding to an incident

If you are made aware of any incident involving sexual harassment towards a pupil from another pupil or upskirting you are required to log this as an incident on CPOMS, using the appropriate tab and a DSL will follow up.

If you are made aware of an incident involving sexting* (also known as 'youth produced sexual imagery'), you must report it to the DSL immediately.

You must **not**:

- View, download or share the imagery yourself, or ask a pupil to share or download it. If you have already viewed the imagery by accident, you must report this to the DSL
- Delete the imagery or ask the pupil to delete it
- Ask the pupil(s) who are involved in the incident to disclose information regarding the imagery (this is the DSL's responsibility)
- Share information about the incident with other members of staff, the pupil(s) it involves or their, or other, parents and/or carers
- Say or do anything to blame or shame any young people involved.

You should explain that you need to report the incident, and reassure the pupil(s) that they will receive support and help from the DSL.

Initial review meeting

Following a report of an incident, the DSL will hold an initial review meeting with appropriate school staff. This meeting will consider the initial evidence and aim to determine:

- Whether there is an immediate risk to pupil(s)
- If a referral needs to be made to the police and/or children's social care
- If it is necessary to view the imagery in order to safeguard the young person (in most cases, imagery should not be viewed)
- What further information is required to decide on the best response
- Whether the imagery has been shared widely and via what services and/or platforms (this may be unknown)
- Whether immediate action should be taken to delete or remove images from devices or online services
- Any relevant facts about the pupils involved which would influence risk assessment
- If there is a need to contact another school, college, setting or individual
- Whether to contact parents or carers of the pupils involved (in most cases parents should be involved).

The DSL will make an immediate referral to police and/or children's social care if:

- The incident involves an adult
- There is reason to believe that a young person has been coerced, blackmailed or groomed, or if there are concerns about their capacity to consent (for example owing to special educational needs)
- What the DSL knows about the imagery suggests the content depicts sexual acts which are unusual for the young person's developmental stage, or are violent
- The imagery involves sexual acts and any pupil in the imagery is under 13
- The DSL has reason to believe a pupil is at immediate risk of harm owing to the sharing of the imagery (for example, the young person is presenting as suicidal or self-harming).

If none of the above apply then the DSL, in consultation with other members of staff as appropriate, may decide to respond to the incident without involving the police or children's social care.

Further review by the DSL

If at the initial review stage, a decision has been made not to refer to police and/or children's social care, the DSL will conduct a further review.

They will hold interviews with the pupils involved (if appropriate) to establish the facts and assess the risks.

If at any point in the process there is a concern that a pupil has been harmed or is at risk of harm, a referral will be made to children's social care and/or the police immediately.

Informing parents

The DSL will inform parents at an early stage and keep them involved in the process, unless there is a good reason to believe that involving them would put the pupil at risk of harm.

Referring to the police

If it is necessary to refer an incident to the police, this will be done through a safer schools officer, a police community support officer, local neighbourhood police, dialling 101 – depending on the nature of incident.

Recording incidents

All sexting* incidents and the decisions made in responding to them will be recorded. The record-keeping arrangements set out in section 14 of this policy also apply to recording incidents of sexting*.

10. Notifying parents

Where appropriate, we will discuss any concerns about a child with the child's parents. The DSL will normally do this in the event of a suspicion or disclosure.

Other staff will only talk to parents about any such concerns following consultation with the DSL.

If we believe that notifying the parents would increase the risk to the child, we will discuss this with the local authority children's social care team before doing so.

In the case of allegations of abuse made against other children, we will normally notify the parents of all the children involved.

11. Pupils with special educational needs and disabilities (SEND)

We recognise that pupils with special educational needs (SEND) and disabilities can face additional safeguarding challenges. Additional barriers can exist when recognising abuse and neglect in this group, including:

- Assumptions that indicators of possible abuse such as behaviour, mood and injury relate to the child's disability without further exploration
- Pupils being more prone to peer group isolation than other pupils
- The potential for pupils with SEND and disabilities being disproportionately impacted by behaviours such as bullying, without outwardly showing any signs
- Communication barriers and difficulties in overcoming these barriers.

We offer extra pastoral support for pupils with SEND and disabilities. This includes:

- Specialist and differentiated curriculum provision
- Mental Health First Aider
- Wellbeing champions
- Pastoral Team
- Autism Champions
- 1:1 support – where appropriate
- Time to Talk.

12. Electronic Devices/cameras

Staff are allowed to bring their personal devices to school for their own use, but will limit such use to non-contact time when pupils are not present in line with the school's Electronic Devices Policy and ICT & Digital Safety Policy. Children in Year 6 are also permitted to bring their phones to school. These are collected at the start of the day and reissued at dismissal.

13. Complaints and concerns about school safeguarding policies

13.1 Complaints against staff

Complaints against staff that are likely to require a child protection investigation will be handled in accordance with our procedures for dealing with allegations of abuse made against staff (see appendix 3).

13.2 Other complaints

Any complaint or concern raised around safeguarding that affects a child is followed up with support from the LADO.

13.3 Whistle-blowing

See Whistle Blowing Policy.

14. Record Keeping

We will hold records in line with our records retention schedule.

All safeguarding concerns, discussions, decisions made and the reasons for those decisions, must be recorded on CPOMS (1st preference) or in writing. If you are in any doubt about whether to record something, discuss it with the DSL.

Non-confidential records will be easily accessible and available. Confidential information and records will be held securely and only available to those who have a right or professional need to see them.

Safeguarding records relating to individual children will be retained for a reasonable period of time after they have left the school.

If a child for whom the school has, or has had, safeguarding concerns moves to another school, the DSL will ensure that their child protection file is forwarded promptly and securely, and separately from the main pupil file. In addition, if the concerns are significant or complex, and/or social services are involved, the DSL will speak to the DSL of the receiving school and provide information to enable them to have time to make any necessary preparations to ensure the safety of the child.

Records are paper based, if written. All others are shared on CPOMS and electronically on the drive.

Statutory information is retained for 25 years.

15. Training

15.1 All staff

All staff members will undertake safeguarding and child protection training at induction, including on whistle-blowing procedures, to ensure they understand the school's safeguarding systems and their responsibilities and can identify signs of possible abuse or neglect. This training will be regularly updated and will be in line with advice from the 3 safeguarding partners.

All staff will have training on the government's anti-radicalisation strategy, Prevent, to enable them to identify children at risk of being drawn into terrorism and to challenge extremist ideas.

Staff will also receive regular safeguarding and child protection updates (for example, through emails, e-bulletins and staff meetings) as required, but at least annually.

Contractors who are provided through a private finance initiative (PFI) or similar contract will also receive safeguarding training.

Volunteers will receive appropriate training, if applicable.

15.2 The DSL and Deputy DSLs

The DSL and deputies will undertake Level 3 child protection and safeguarding training at least every 2 years. In addition, they will update their knowledge and skills at regular intervals and at least annually (for example, through e-bulletins, meeting other DSLs, or taking time to read and digest safeguarding developments).

They will also undertake Prevent Awareness training.

15.3 Governors

All governors receive training about safeguarding, to make sure they have the knowledge and information needed to perform their functions and understand their responsibilities. As the Chair of Governors may be required to act as the 'case manager' in the event that an allegation of abuse is made against the Headteacher, they receive training in managing allegations for this purpose.

15.4 Recruitment – interview panels

At least one person conducting any interview for a post at the school will have undertaken safer recruitment training. This will cover, as a minimum, the contents of the Department for Education's statutory guidance, Keeping Children Safe in Education, and will be in line with local safeguarding procedures.

15.5 Staff who have contact with pupils and families

All staff who have contact with children and families will have annual safeguarding training. All meetings with families known to social care are carried out by the Pastoral Lead and DSLs.

16. Monitoring arrangements

This policy will be reviewed **annually** by the Headteacher. At every review, it will be approved by the full governing board.

17. Related Policies

This policy links to the following policies and procedures:

- Behaviour for Learning
- Staff code of conduct
- Whistleblowing
- Complaints
- Health and safety
- Attendance
- Online safety
- Equality
- Relationship and sex education
- First aid
- Curriculum
- Privacy notices
- Dealing with allegations of abuse.

Written by: Nicola Kelly, Headteacher

Approved by: FGB

Date approved: October 2025

Review Date: October 2026

The appendices are based on the Department for Education's statutory guidance, Keeping Children Safe in Education.

Appendix 1: Types of abuse

Abuse, including neglect, and safeguarding issues are rarely standalone events that can be covered by one definition or label. In most cases, multiple issues will overlap.

Physical abuse may involve hitting, shaking, throwing, poisoning, burning or scalding, drowning, suffocating or otherwise causing physical harm to a child. Physical harm may also be caused when a parent or carer fabricates the symptoms of, or deliberately induces, illness in a child.

Emotional abuse is the persistent emotional maltreatment of a child such as to cause severe and adverse effects on the child's emotional development. Some level of emotional abuse is involved in all types of maltreatment of a child, although it may occur alone.

Emotional abuse may involve:

- Conveying to a child that they are worthless or unloved, inadequate, or valued only insofar as they meet the needs of another person
- Not giving the child opportunities to express their views, deliberately silencing them or 'making fun' of what they say or how they communicate
- Age or developmentally inappropriate expectations being imposed on children. These may include interactions that are beyond a child's developmental capability, as well as overprotection and limitation of exploration and learning, or preventing the child participating in normal social interaction
- Seeing or hearing the ill-treatment of another
- Serious bullying (including cyberbullying), causing children frequently to feel frightened or in danger, or the exploitation or corruption of children.

Sexual abuse involves forcing or enticing a child or young person to take part in sexual activities, not necessarily involving a high level of violence, whether or not the child is aware of what is happening. The activities may involve:

- Physical contact, including assault by penetration (for example rape or oral sex) or non-penetrative acts such as masturbation, kissing, rubbing and touching outside of clothing
- Non-contact activities, such as involving children in looking at, or in the production of, sexual images, watching sexual activities, encouraging children to behave in sexually inappropriate ways, or grooming a child in preparation for abuse (including via the internet)
- Sexual abuse is not solely perpetrated by adult males. Women can also commit acts of sexual abuse, as can other children

Neglect is the persistent failure to meet a child's basic physical and/or psychological needs, likely to result in the serious impairment of the child's health or development. Neglect may occur during pregnancy as a result of maternal substance abuse.

Once a child is born, neglect may involve a parent or carer failing to:

- Provide adequate food, clothing and shelter (including exclusion from home or abandonment)
- Protect a child from physical and emotional harm or danger
- Ensure adequate supervision (including the use of inadequate care-givers)
- Ensure access to appropriate medical care or treatment
- It may also include neglect of, or unresponsiveness to, a child's basic emotional needs.

Appendix 2: Safer recruitment and DBS checks – policy and procedures

We will record all information on the checks carried out in the school's single central record (SCR). Copies of these checks, where appropriate, will be held in individuals' personnel files. We follow requirements and best practice in retaining copies of these checks, as set out below.

New staff

When appointing new staff, we will:

- Verify their identity
- Obtain (via the applicant) an enhanced Disclosure and Barring Service (DBS) certificate, including barred list information for those who will be engaging in regulated activity (see definition below). We will not keep a copy of this for longer than 6 months
- Obtain a separate barred list check if they will start work in regulated activity before the DBS certificate is available
- Verify their mental and physical fitness to carry out their work responsibilities
- Verify their right to work in the UK. We will keep a copy of this verification for the duration of the member of staff's employment and for 2 years afterwards
- Verify their professional qualifications, as appropriate
- Ensure they are not subject to a prohibition order if they are employed to be a teacher
- Carry out further additional checks, as appropriate, on candidates who have lived or worked outside of the UK, including (where relevant) any teacher sanctions or restrictions imposed by a European Economic Area professional regulating authority, and criminal records checks or their equivalent
- Check that candidates taking up a management position are not subject to a prohibition from management Section 128 direction made by the secretary of state. Paragraph 261. KCSIE 2025

We will ensure that appropriate checks are carried out to ensure that individuals are not disqualified under the 2018 Childcare Disqualification Regulations and Childcare Act 2006. When we take a decision that an individual falls outside of the scope of these regulations and we do not carry out such checks, we will retain a record of our assessment on the individual's personnel file. This will include our evaluation of any risks and control measures put in place, and any advice sought.

We will ask for written information about previous employment history and check that information is not contradictory or incomplete.

We will seek references on all short-listed candidates, including internal candidates, before interview. We will scrutinise these and resolve any concerns before confirming appointments. The references requested will ask specific questions about the suitability of the applicant to work with children. See KCSIE 2025. Paragraph 226-228

Regulated activity means a person who will be:

- Responsible, on a regular basis in a school or college, for teaching, training, instructing, caring for or supervising children; or
- Carrying out paid, or unsupervised unpaid, work regularly in a school or college where that work provides an opportunity for contact with children; or
- Engaging in intimate or personal care or overnight activity, even if this happens only once and regardless of whether they are supervised or not.

Existing staff

If we have concerns about an existing member of staff's suitability to work with children, we will carry out all the relevant checks as if the individual was a new member of staff. We will also do this if an individual moves from a post that is not regulated activity to one that is. We will refer to the DBS anyone who has harmed, or poses a risk of harm, to a child or vulnerable adult where:

- We believe the individual has engaged in relevant conduct; or
- The individual has received a caution or conviction for a relevant offence, or there is reason to believe the individual has committed a listed relevant offence, under the Safeguarding Vulnerable Groups Act 2006 (Prescribed Criteria and Miscellaneous Provisions) Regulations 2009; or
- The 'harm test' is satisfied in respect of the individual (i.e. they may harm a child or vulnerable adult or put them at risk of harm); and
- The individual has been removed from working in regulated activity (paid or unpaid) or would have been removed if they had not left.

Agency and third-party staff

We will obtain written notification from any agency or third-party organisation that it has carried out the necessary safer recruitment checks that we would otherwise perform. We will also check that the person presenting themselves for work is the same person on whom the checks have been made.

Contractors

We will ensure that any contractor, or any employee of the contractor, who is to work at the school has had the appropriate level of DBS check (this includes contractors who are provided through a PFI or similar contract).

This will be:

- An enhanced DBS check with barred list information for contractors engaging in regulated activity
- An enhanced DBS check, not including barred list information, for all other contractors who are not in regulated activity but whose work provides them with an opportunity for regular contact with children.

We will obtain the DBS check for self-employed contractors. We will not keep copies of such checks for longer than 6 months.

Contractors who have not had any checks will not be allowed to work unsupervised or engage in regulated activity under any circumstances.

We will check the identity of all contractors and their staff on arrival at the school.

For self-employed contractors such as music teachers or sports coaches, we will ensure that appropriate checks are carried out to ensure that individuals are not disqualified under the 2018 Childcare Disqualification Regulations and Childcare Act 2006. When we decide that an individual falls outside of the scope of these regulations and we do not carry out such checks, we will retain a record of our assessment. This will include our evaluation of any risks and control measures put in place, and any advice sought.

Trainee/student teachers

Where applicants for initial teacher training are salaried by us, we will ensure that all necessary checks are carried out.

Where trainee teachers are fee-funded, we will obtain written confirmation from the training provider that necessary checks have been carried out and that the trainee has been judged by the provider to be suitable to work with children.

In both cases, this includes checks to ensure that individuals are not disqualified under the 2018 Childcare Disqualification Regulations and Childcare Act 2006.

Volunteers

We will:

- Never leave an unchecked volunteer unsupervised or allow them to work in regulated activity
- Obtain an enhanced DBS check with barred list information for all volunteers who are new to working in regulated activity
- Carry out a risk assessment when deciding whether to seek an enhanced DBS check without barred list information for any volunteers not engaging in regulated activity. We will retain a record of this risk assessment
- Ensure that appropriate checks are carried out to ensure that individuals are not disqualified under the 2018 Childcare Disqualification Regulations and Childcare Act 2006. When we decide that an individual falls outside of the scope of these regulations and we do not carry out such checks, we will retain a record of our assessment. This will include our evaluation of any risks and control measures put in place, and any advice sought.

Governors

All governors will have an enhanced DBS check without barred list information.

They will have an enhanced DBS check with barred list information if working in regulated activity.

All proprietors, trustees, local governors and members will also have the following checks:

- A section 128 check (to check prohibition on participation in management under [section 128 of the Education and Skills Act 2008](#))
- Identity
- Right to work in the UK
- Other checks deemed necessary if they have lived or worked outside the UK.

Staff working in alternative provision settings

When we place a pupil with an alternative provision provider, we obtain written confirmation from the provider that they have carried out the appropriate safeguarding checks on individuals working there that we would otherwise perform.

When organising work experience, we will ensure that policies and procedures are in place to protect children from harm.

We will also consider whether it is necessary for barred list checks to be carried out on the individuals who supervise a pupil under 16 on work experience. This will depend on the specific circumstances of the work experience, including the nature of the supervision, the frequency of the activity being supervised, and whether the work is regulated activity.

Appendix 3: Allegations of abuse made against staff HR Dealing with allegations policy

This section of this policy applies to all cases in which it is alleged that a current member of staff or volunteer has:

- Behaved in a way that has harmed a child, or may have harmed a child, or
- Possibly committed a criminal offence against or related to a child, or
- Behaved towards a child or children in a way that indicates he or she would pose a risk of harm to children
- It applies regardless of whether the alleged abuse took place in the school. Allegations against a teacher who is no longer teaching and historical allegations of abuse will be referred to the police.
- We will deal with any allegation of abuse against a member of staff or volunteer very quickly, in a fair and consistent way that provides effective child protection while also supporting the individual who is the subject of the allegation.
- Our procedures for dealing with allegations will be applied with common sense and judgment.

Suspension

Suspension will not be the default position, and will only be considered in cases where there is reason to suspect that a child or other children is/are at risk of harm, or the case is so serious that it might be grounds for dismissal. In such cases, we will only suspend an individual if we have considered all other options available and there is no reasonable alternative.

Based on an assessment of risk, we will consider alternatives such as:

- Redeployment within the school so that the individual does not have direct contact with the child or children concerned
- Providing an assistant to be present when the individual has contact with children
- Redeploying the individual to alternative work in the school so that they do not have unsupervised access to children
- Moving the child or children to classes where they will not come into contact with the individual, making it clear that this is not a punishment and parents have been consulted.

Definitions for outcomes of allegation investigations

- **Substantiated:** there is sufficient evidence to prove the allegation
- **Malicious:** there is sufficient evidence to disprove the allegation and there has been a deliberate act to deceive
- **False:** there is sufficient evidence to disprove the allegation
- **Unsubstantiated:** there is insufficient evidence to either prove or disprove the allegation (this does not imply guilt or innocence)
- **Unfounded:** to reflect cases where there is no evidence or proper basis which supports the allegation being made

Procedure for dealing with allegations

In the event of an allegation that meets the criteria above, the Headteacher (or Chair of Governors where the Headteacher is the subject of the allegation) – the ‘case manager’ – will take the following steps:

- Immediately discuss the allegation with the designated officer at the local authority. This is to consider the nature, content and context of the allegation and agree a course of action, including whether further enquiries are necessary to enable a decision on how to proceed, and whether it is necessary to involve the police and/or children’s social care services. (The case manager may, on occasion, consider it necessary to involve the police *before* consulting the designated officer – for example, if the accused individual is deemed to be an immediate risk to children or there is evidence of a possible criminal offence. In such cases, the case manager will notify the designated officer as soon as practicably possible after contacting the police)
- Inform the accused individual of the concerns or allegations and likely course of action as soon as possible after speaking to the designated officer (and the police or children’s social care services, where necessary). Where the police and/or children’s social care services are involved, the case manager will only share such information with the individual as has been agreed with those agencies
- Where appropriate (in the circumstances described above), carefully consider whether suspension of the individual from contact with children at the school is justified or whether alternative arrangements such as those outlined above can be put in place. Advice will be sought from the designated officer, police and/or children’s social care services, as appropriate.

If immediate suspension is considered necessary, agree and record the rationale for this with the designated officer. The record will include information about the alternatives to suspension that have been considered, and why they were rejected. Written confirmation of the suspension will be provided to the individual facing the allegation or concern within 1 working day, and the individual will be given a named contact at the school and their contact details.

If it is decided that no further action is to be taken in regard to the subject of the allegation or concern, record this decision and the justification for it and agree with the designated officer what information should be put in writing to the individual and by whom, as well as what action should follow both in respect of the individual and those who made the initial allegation.

If it is decided that further action is needed, take steps as agreed with the designated officer to initiate the appropriate action in school and/or liaise with the police and/or children’s social care services as appropriate.

Provide effective support for the individual facing the allegation or concern, including appointing a named representative to keep them informed of the progress of the case and considering what other support is appropriate. All affected staff will have a named colleague for support and can seek union advice.

Inform the parents / carers of the child/children involved about the allegation as soon as possible if they do not already know (following agreement with children's social care services and/or the police, if applicable). The case manager will also inform the parents / carers of the requirement to maintain confidentiality about any allegations made against teachers (where this applies) while investigations are ongoing. Any parent / carer who wishes to have the confidentiality restrictions removed in respect of a teacher will be advised to seek legal advice. Keep the parents or carers of the child/children involved informed of the progress of the case and the outcome, where there is not a criminal prosecution, including the outcome of any disciplinary process (in confidence). Make a referral to the DBS where it is thought that the individual facing the allegation or concern has engaged in conduct that harmed or is likely to harm a child, or if the individual otherwise poses a risk of harm to a child.

We will inform Ofsted of any allegations of serious harm or abuse by any person living, working, or looking after children at the premises (whether the allegations relate to harm or abuse committed on the premises or elsewhere), and any action taken in respect of the allegations. This notification will be made as soon as reasonably possible and always within 14 days of the allegations being made.

If the school is made aware that the secretary of state has made an interim prohibition order in respect of an individual, we will immediately suspend that individual from teaching, pending the findings of the investigation by the Teaching Regulation Agency. Where the police are involved, wherever possible the governing board will ask the police at the start of the investigation to obtain consent from the individuals involved to share their statements and evidence for use in the school's disciplinary process, should this be required at a later point.

Timescales

- Any cases where it is clear immediately that the allegation is unsubstantiated or malicious will be resolved within 1 week
- If the nature of an allegation does not require formal disciplinary action, we will institute appropriate action within 3 working days
- If a disciplinary hearing is required and can be held without further investigation, we will hold this within 15 working days.

Specific actions

Action following a criminal investigation or prosecution

The case manager will discuss with the local authority's designated officer whether any further action, including disciplinary action, is appropriate and, if so, how to proceed, taking into account information provided by the police and/or children's social care services.

Conclusion of a case where the allegation is substantiated

If the allegation is substantiated and the individual is dismissed or the school ceases to use their services, or the individual resigns or otherwise ceases to provide their services, the case manager and the school's personnel adviser will discuss with the designated officer whether to make a referral to the DBS for consideration of whether inclusion on the barred lists is required. If the

individual concerned is a member of teaching staff, the case manager and personnel adviser will discuss with the designated officer whether to refer the matter to the Teaching Regulation Agency to consider prohibiting the individual from teaching.

Individuals returning to work after suspension

If it is decided on the conclusion of a case that an individual who has been suspended can return to work, the case manager will consider how best to facilitate this. The case manager will also consider how best to manage the individual's contact with the child or children who made the allegation, if they are still attending the school.

Unsubstantiated or malicious allegations

If an allegation is shown to be deliberately invented, or malicious, the Headteacher, or other appropriate person in the case of an allegation against the Headteacher, will consider whether any disciplinary action is appropriate against the pupil(s) who made it, or whether the police should be asked to consider whether action against those who made the allegation might be appropriate, even if they are not a pupil. The staff will be supported to be reintegrated back into work.

Confidentiality

The school will make every effort to maintain confidentiality and guard against unwanted publicity while an allegation is being investigated or considered. The case manager will take advice from the local authority's designated officer, police and children's social care services, as appropriate, to agree:

- Who needs to know about the allegation and what information can be shared?
- How to manage speculation, leaks and gossip, including how to make parents or carers of a child/children involved aware of their obligations with respect to confidentiality
- What, if any, information can be reasonably given to the wider community to reduce speculation
- How to manage press interest if, and when, it arises.

Record-keeping

The case manager will maintain clear records about any case where the allegation or concern meets the criteria above and store them on the individual's confidential personnel file for the duration of the case. Such records will include:

- A clear and comprehensive summary of the allegation
- Details of how the allegation was followed up and resolved
- Notes of any action taken and decisions reached (and justification for these, as stated above).

If an allegation or concern is not found to have been malicious, the school will retain the records of the case on the individual's confidential personnel file, and provide a copy to the individual. Where records contain information about allegations of sexual abuse, we will preserve these for the Independent Inquiry into Child Sexual Abuse (IICSA), for the term of the inquiry. We will retain all other records at least until the individual has reached normal pension age, or for 10 years from the

date of the allegation if that is longer. The records of any allegation that is found to be malicious will be deleted from the individual's personnel file.

References

When providing employer references, we will not refer to any allegation that has been proven to be false, unsubstantiated or malicious, or any history of allegations where all such allegations have been proven to be false, unsubstantiated or malicious.

Learning lessons

After any cases where the allegations are *substantiated*, we will review the circumstances of the case with the local authority's designated officer to determine whether there are any improvements that we can make to the school's procedures or practice to help prevent similar events in the future.

This will include consideration of (as applicable):

- Issues arising from the decision to suspend the member of staff
- The duration of the suspension
- Whether or not the suspension was justified
- The use of suspension when the individual is subsequently reinstated. We will consider how future investigations of a similar nature could be carried out without suspending the individual.

Appendix 4: Specific safeguarding issues

Children missing from education (CME)

A child going missing from education, particularly repeatedly, can be a warning sign of a range of safeguarding issues. This might include abuse or neglect, such as sexual abuse or exploitation or child criminal exploitation, or issues such as mental health problems, substance abuse, radicalisation, FGM or forced marriage.

There are many circumstances where a child may become missing from education, but some children are particularly at risk. These include children who:

- Are at risk of harm or neglect
- Are at risk of forced marriage or FGM
- Come from Gypsy, Roma, or Traveller families
- Come from the families of service personnel
- Go missing or run away from home or care
- Are supervised by the youth justice system
- Cease to attend a school
- Come from new migrant families.

We will follow our procedures for unauthorised absence and for dealing with children who go missing from education, particularly on repeat occasions, to help identify the risk of abuse and neglect, including sexual exploitation, and to help prevent the risks of going missing in future. This includes informing the local authority if a child leaves the school without a new school being named, and adhering to requirements with respect to sharing information with the local authority, when applicable, when removing a child's name from the admission register at non-standard transition points.

Staff will be trained in signs to look out for and the individual triggers to be aware of when considering the risks of potential safeguarding concerns which may be related to being missing, such as travelling to conflict zones, FGM and forced marriage.

If a staff member suspects that a child is suffering from harm or neglect, we will follow local child protection procedures, including with respect to making reasonable enquiries. We will make an immediate referral to the local authority children's social care team, and the police, if the child is suffering or likely to suffer from harm, or in immediate danger.

Child sexual exploitation (CSE)

Child sexual exploitation (CSE) is a form of child sexual abuse that occurs where an individual or group takes advantage of an imbalance of power to coerce, manipulate or deceive a child into sexual activity in exchange for something the victim needs or wants, and/or for the financial advantage or increased status of the perpetrator or facilitator.

This can involve violent, humiliating and degrading sexual assaults, but does not always involve physical contact and can happen online. For example, young people may be persuaded or forced to

share sexually explicit images of themselves, have sexual conversations by text, or take part in sexual activities using a webcam.

Children or young people who are being sexually exploited may not understand that they are being abused. They often trust their abuser and may be tricked into believing they are in a loving, consensual relationship.

If a member of staff suspects CSE, they will discuss this with the DSL. The DSL will trigger the local safeguarding procedures, including a referral to the local authority's children's social care team and the police, if appropriate.

Indicators of sexual exploitation can include a child:

- Appearing with unexplained gifts or new possessions
- Associating with other young people involved in exploitation
- Having older boyfriends or girlfriends
- Suffering from sexually transmitted infections or becoming pregnant
- Displaying inappropriate sexualised behaviour
- Suffering from changes in emotional wellbeing
- Misusing drugs and/or alcohol
- Going missing for periods of time, or regularly coming home late
- Regularly missing school or education, or not taking part in education.

Homelessness

Being homeless or being at risk of becoming homeless presents a real risk to a child's welfare.

The DSLs and Deputy DSLs will be aware of contact details and referral routes into the local housing authority so they can raise/progress concerns at the earliest opportunity (where appropriate and in accordance with local procedures).

Where a child has been harmed or is at risk of harm, the DSL will also make a referral to children's social care.

So-called 'honour-based' violence (including FGM and forced marriage)

So-called 'honour-based' violence (HBV) encompasses incidents or crimes committed to protect or defend the honour of the family and/or community, including FGM, forced marriage, and practices such as breast ironing.

Abuse committed in this context often involves a wider network of family or community pressure and can include multiple perpetrators.

All forms of HBV are abuse and will be handled and escalated as such. All staff will be alert to the possibility of a child being at risk of HBV or already having suffered it. If staff have a concern, they will speak to the DSL, who will activate local safeguarding procedures.

FGM

The DSL will make sure that staff have access to appropriate training to equip them to be alert to children affected by FGM or at risk of FGM.

Section 8.3 of this policy sets out the procedures to be followed if a staff member discovers that an act of FGM appears to have been carried out or suspects that a pupil is at risk of FGM.

Indicators that FGM has already occurred include:

- A pupil confiding in a professional that FGM has taken place
- A mother/family member disclosing that FGM has been carried out
- A family/pupil already being known to social services in relation to other safeguarding issues.

A girl:

- Having difficulty walking, sitting or standing, or looking uncomfortable
- Finding it hard to sit still for long periods of time (where this was not a problem previously)
- Spending longer than normal in the bathroom or toilet due to difficulties urinating
- Having frequent urinary, menstrual or stomach problems
- Avoiding physical exercise or missing PE
- Being repeatedly absent from school, or absent for a prolonged period
- Demonstrating increased emotional and psychological needs – for example, withdrawal or depression, or significant change in behaviour
- Being reluctant to undergo any medical examinations
- Asking for help, but not being explicit about the problem
- Talking about pain or discomfort between her legs.

Potential signs that a pupil may be at risk of FGM include:

- The girl's family having a history of practising FGM (this is the biggest risk factor to consider)
- FGM being known to be practised in the girl's community or country of origin
- A parent or family member expressing concern that FGM may be carried out
- A family not engaging with professionals (health, education or other) or already being known to social care in relation to other safeguarding issues
- A girl:
 - Having a mother, older sibling or cousin who has undergone FGM
 - Having limited level of integration with UK society
 - Confiding to a professional that she is to have a "special procedure" or to attend a special occasion to "become a woman"
 - Talking about a long holiday to her country of origin or another country where the practice is prevalent, or parents stating that they are or a relative will take the girl out of the country for a prolonged period
 - Requesting help from a teacher or another adult because she is aware or suspects that she is at immediate risk of FGM
 - Talking about FGM in conversation – for example, a girl may tell other children about it (although it is important to take into account the context of the discussion)

- Being unexpectedly absent from school
- Having sections missing from her 'red book' (child health record) and/or attending a travel clinic or equivalent for vaccinations/anti-malarial medication.

The above indicators and risk factors are not intended to be exhaustive.

Forced marriage

Forcing a person into marriage is a crime. A forced marriage is one entered into without the full and free consent of one or both parties and where violence, threats, or any other form of coercion is used to cause a person to enter into a marriage. Threats can be physical or emotional and psychological.

Staff will receive training around forced marriage and the presenting symptoms. We are aware of the 'one chance' rule, i.e. we may only have one chance to speak to the potential victim and only one chance to save them.

If a member of staff suspects that a pupil is being forced into marriage, they will speak to the pupil about their concerns in a secure and private place. They will then report this to the DSL.

The DSL will:

- Speak to the pupil about the concerns in a secure and private place
- Activate the local safeguarding procedures and refer the case to the local authority's designated officer
- Seek advice from the Forced Marriage Unit on 020 7008 0151 or fm@fco.gov.uk
- Refer the pupil to an education welfare officer, pastoral tutor, learning mentor, or school counsellor, as appropriate.

Preventing radicalisation

Radicalisation refers to the process by which a person comes to support terrorism and forms of extremism. Extremism is vocal or active opposition to fundamental British values, such as democracy, the rule of law, individual liberty, and mutual respect and tolerance of different faiths and beliefs.

Schools have a duty to prevent children from being drawn into terrorism. The DSL will undertake Prevent awareness training and make sure that staff have access to appropriate training to equip them to identify children at risk.

We will assess the risk of children in our school being drawn into terrorism. This assessment will be based on an understanding of the potential risk in our local area, in collaboration with our local safeguarding partners and local police force.

We will ensure that suitable internet filtering is in place, and equip our pupils to stay safe online at school and at home.

There is no single way of identifying an individual who is likely to be susceptible to an extremist ideology. Radicalisation can occur quickly or over a long period.

Staff will be alert to changes in pupils' behaviour.

The government website [Educate Against Hate](#) and charity [NSPCC](#) say that signs that a pupil is being radicalised can include:

- Refusal to engage with, or becoming abusive to, peers who are different from themselves
- Becoming susceptible to conspiracy theories and feelings of persecution
- Changes in friendship groups and appearance
- Rejecting activities, they used to enjoy
- Converting to a new religion
- Isolating themselves from family and friends
- Talking as if from a scripted speech
- An unwillingness or inability to discuss their views
- A sudden disrespectful attitude towards others
- Increased levels of anger
- Increased secretiveness, especially around internet use
- Expressions of sympathy for extremist ideologies and groups, or justification of their actions
- Accessing extremist material online, including on Facebook or Twitter
- Possessing extremist literature
- Being in contact with extremist recruiters and joining, or seeking to join, extremist organisations.

Children who are at risk of radicalisation may have low self-esteem, or be victims of bullying or discrimination. It is important to note that these signs can also be part of normal teenage behaviour – staff should have confidence in their instincts and seek advice if something feels wrong.

If staff are concerned about a pupil, they will follow our procedures set out in section 7.5 of this policy, including discussing their concerns with the DSL.

Staff should **always** take action if they are worried.

Further information on the school's measures to prevent radicalisation are set out in other school policies and procedures, including the Behaviour policy, online/e-safety policy, and Child Protection Policy.

Checking the identity and suitability of visitors

All visitors will be required to verify their identity to the satisfaction of staff and to leave their belongings, including their mobile phone(s), in a safe place during their visit. If the visitor is unknown to the setting, we will check their credentials and reason for visiting before allowing them to enter the setting. Visitors should be ready to produce identification. Visitors are expected to sign the visitors' book and wear a visitor's badge. Visitors to the school who are visiting for a professional purpose, such as educational psychologists and school improvement officers, will be asked to show photo ID and:

- Will be asked to show their DBS certificate, which will be checked alongside their photo ID; or
- The organisation sending the professional, such as the LA or educational psychology service, will provide prior written confirmation that an enhanced DBS check with barred list information has been carried out.

All other visitors, including visiting speakers, will be accompanied by a member of staff at all times. We will not invite into the school any speaker who is known to disseminate extremist views, and will carry out appropriate checks to ensure that any individual or organisation using school facilities is not seeking to disseminate extremist views or radicalise pupils or staff.

Non-collection of children

If a child is not collected at the end of the session/day, we will:

- Call the contacts listed on SIMS
- Contact the Emergency duty team at 5.00 pm on 01895 250111.

Missing pupils

Our procedures are designed to ensure that a missing child is found and returned to effective supervision as soon as possible.

See Missing / Lost Child Policy

Supply Staff

It is a school's responsibility to follow up safeguarding concerns/liaise with LADO even if staff are employed through an agency.